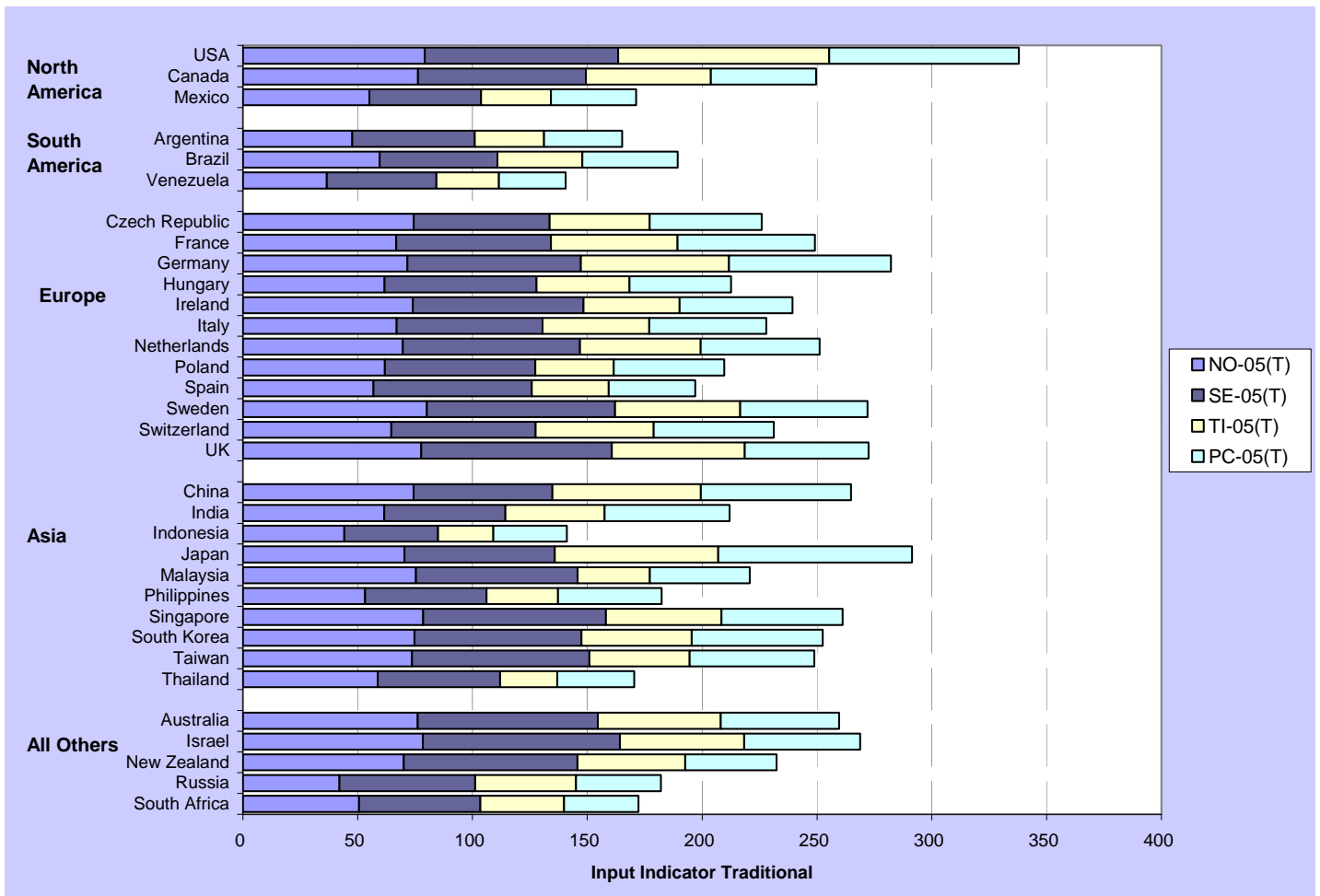


**Figure 3: INPUT 2005 Traditional – INPUT-05 (T) -- Breakout**



*Note:* INPUT adds together our four Input (leading) indicators – NO, SE, TI, and PC -- each of which is an average of components scaled 0-100, so the potential INPUT range is 0-400.

The graph “INPUT-05 (T) Breakout” dissects the INPUT indicator into its component parts. A cursory look at this graph shows a more even contribution from the individual indicators than seen in the INPUT-05 (S) breakout (Figure 10). From this formulation, the indicators National Orientation and Socio-economic Infrastructure exhibit statistical similarities; each has means and standard deviations equal to approximately 65 and 12, respectively. Technological Infrastructure and Productive Capacity are similar to each other with means and standard deviations of about 47 and 14, respectively.