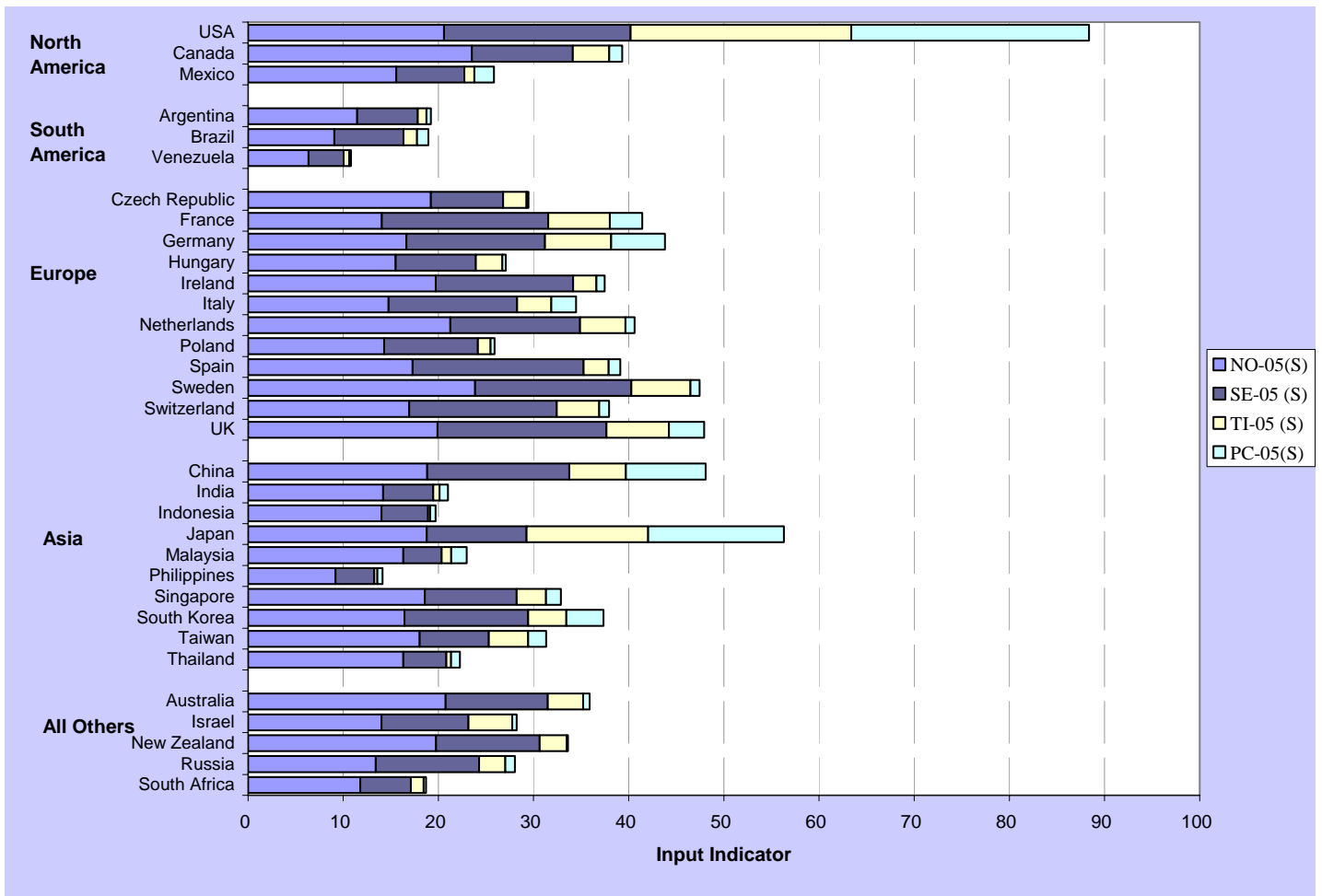


**Figure 10: INPUT 2005 Statistics-only – INPUT-05 (S)- Breakout**



*Note:* INPUT adds together our four Input (leading) indicators – NO, SE, TI, and PC -- each of which is an average of components scaled 0-100, so the potential INPUT range is 0-400.

The Statistics-only formulation for the INPUT indicator suggests that two components, National Orientation and Socio-economic Infrastructure, contribute more substantially than Technological Infrastructure and Productive Capacity to most countries' scores. While on average National Orientation and Socio-economic Infrastructure add approximately 107 points, Technological Infrastructure provides, on average, 15.7, and Productive Capacity, 10.8. The U.S. achieves its dominant position largely from its strong TI and PC values.