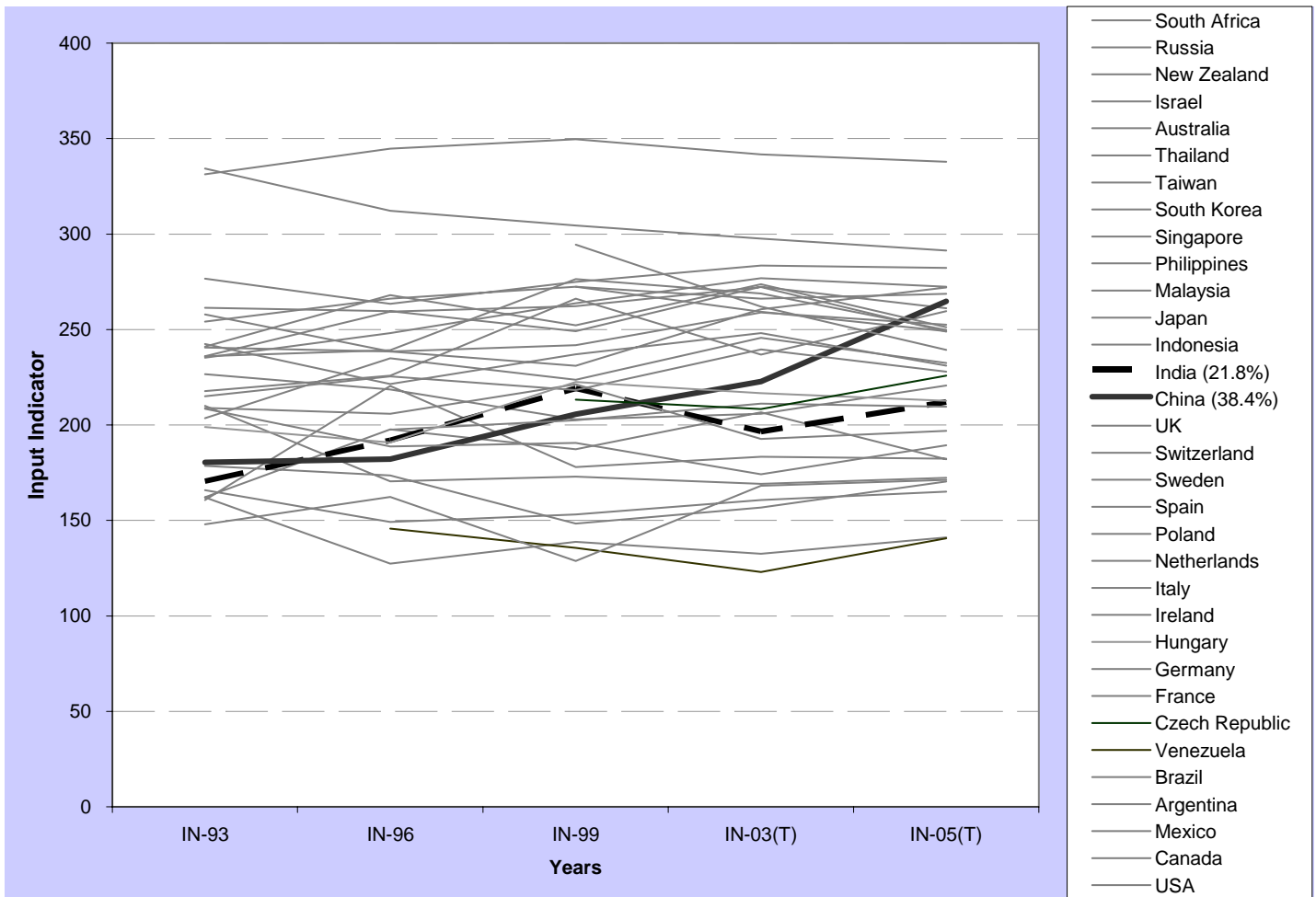


Figure 30: INPUT, Traditional -- INPUT(T) 1993-2005: Spotlighting China and India



Note: INPUT adds together our four Input (leading) indicators – NO, SE, TI, and PC -- each of which is an average of components scaled 0-100, so the potential INPUT range is 0-400.

India and China have exhibited a significant increase over time in comparison to other countries. The development of their INPUT capabilities shows huge gains from 1993 to 2005. India shows an average percent growth each year of 1.8%, while China returns an average 3.2%. In comparison to the average yearly growth of the remaining countries (0.05%), the growth of the China and India Input indicator is significant. [As with all the indicators, each employs S-scoring that pegs components to a maximum of 100 each time, so general stability is mandated.]