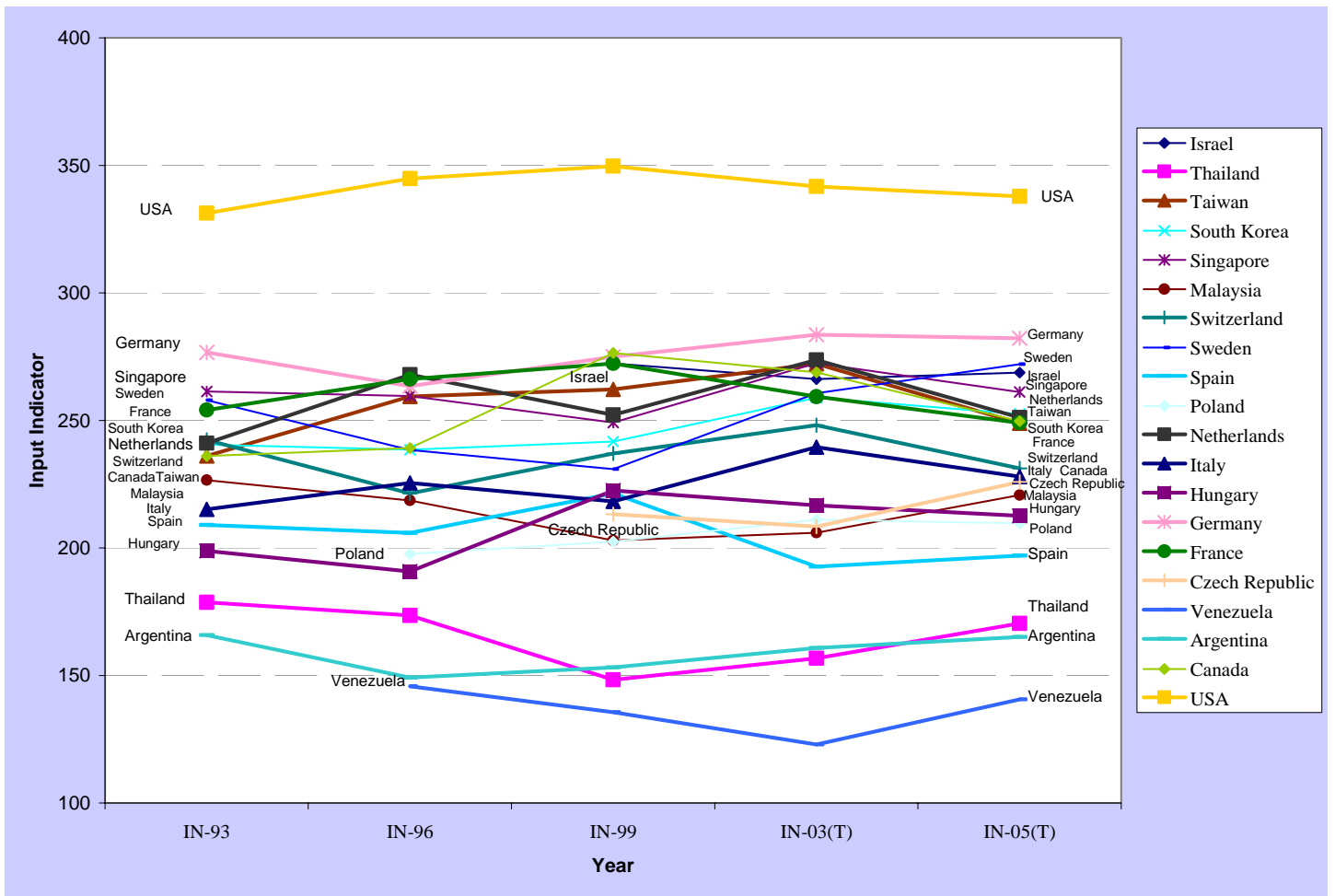


Figure 33: INPUT, Traditional -- INPUT(T) 1993-2005: Relatively Stable Nations (between +10% and -10% change)



Note: INPUT adds together our four Input (leading) indicators – NO, SE, TI, and PC -- each of which is an average of components scaled 0-100, so the potential INPUT range is 0-400.

This group of countries remained relatively consistent over time in their INPUT indicator (Traditional formulation). The 2005 INPUT indicator value for these countries has not deviated more than 10% away from their original 1993 indicator value. These countries comprise 60% of the 33 country sample.